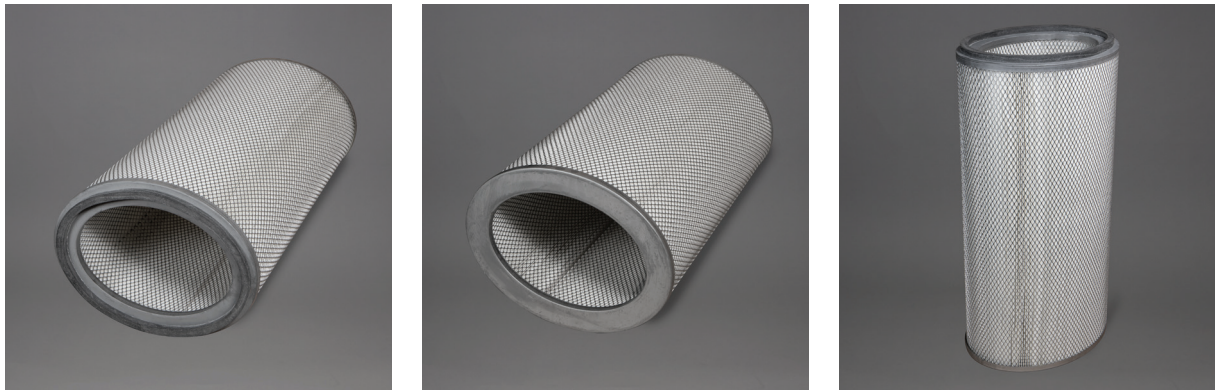


TECHNICAL DATA SHEET



Dust Cartridge Specifications

| | | |
|-------------------------------|---|--|
| Filter Dimensions | Diameter | 14.4" x 11.4" OD |
| | Length | 26" L |
| Style | Top/Bottom | Open/Open |
| End Caps | Galvanized | |
| Support | Inner | Galvanized Expanded Metal |
| | Outer | Galvanized Expanded Metal |
| Filter Media | Nanofiber surface treated cellulose/polyester blend | |
| Number of Pleats | 362 | |
| Filter Area | 196 Sq. Ft. | |
| Max. Oper. Temperature | 200° F | |
| Permeability | CFM @ 0.5" H ₂ O | 25 |
| Gasket | Top | Polyisoprene 1/2" height / 11.7" x 8.7" ID |
| MERV Rating | 15 | |

